



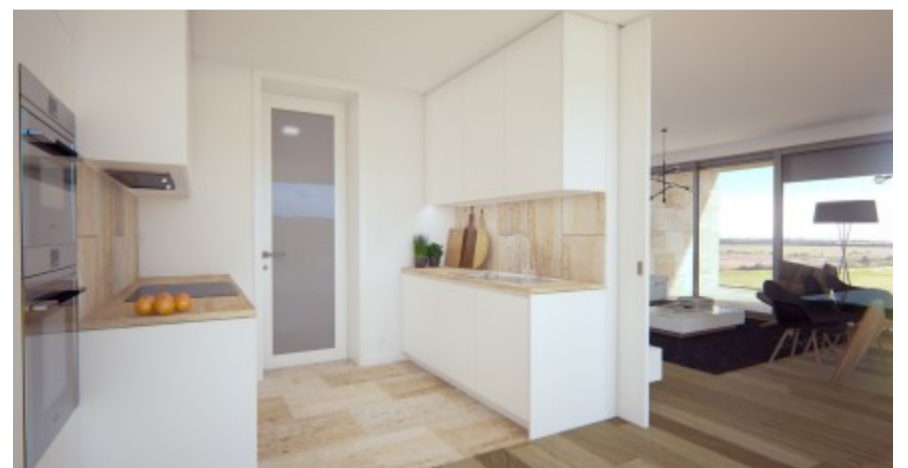
IDEALHOMES > Portugal

Apartment on Luxury Residential Complex in Vilamoura, Loulé

The Laguna village residential complex, located in a luxury touristic resort in Vilamoura – opposite the golf course and only 10 minutes walking distance from the Marina and Falésia Beach, was designed in perfect harmony with nature in order to provide a high level of tranquility and well being. Implanted on a plot of land with 82 000m² with 4 independent apartment buildings, with areas ranging from 93m² to 111m² with generous balconies and /or terraces with BBQ with areas ranging, approximately, from 26m² to 283m² and 16 independent villas, each with private swimming pools, with generous green areas and superb golf and sea views.

Among other important features it is important to highlight the officially rated Energy Level A, in itself a guarantee of a high level of thermal efficiency, the magnificent natural lighting and the excellence of the applied natural materials.

The bedrooms are comprised of high quality flooring in oak wood on cork, the kitchen is equipped with high spec Siemens household appliances. The living rooms oak wood flooring gives a contemporary and modern feeling throughout. Special features include solar panels, garage, pool, gymnasium, sauna and Turkish baths.



Area: 287 m²

Bedroom(s): 2

Bathroom(s): 2

Pool: No

Garden: No

795.000 €

Ref: IDH8409