

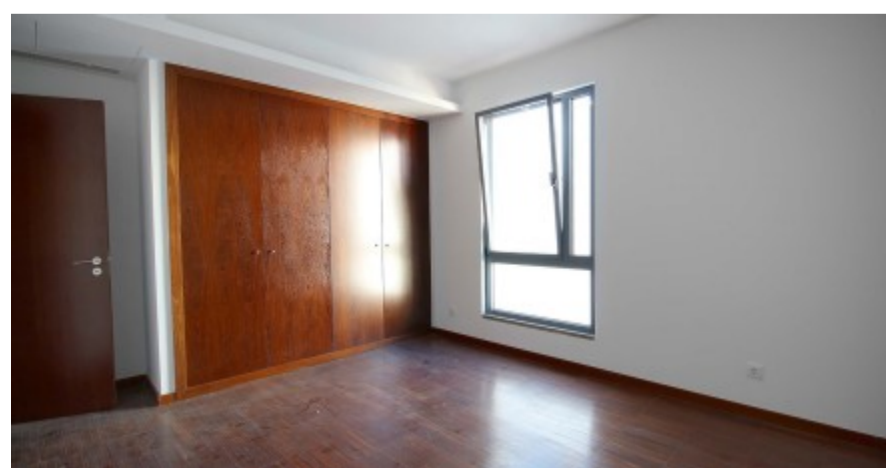
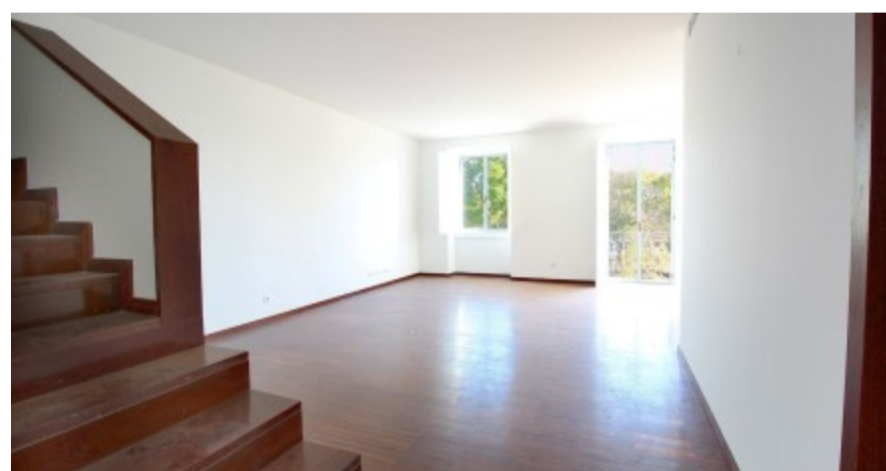


IDEALHOMES Portugal

Stunning 2 bedroom apartment in Portimão

The building is the result of a major rehabilitation project, for a set of very emblematic buildings, with a strong waterfront exposure, in the old town of Portimão. Consisting of 5 apartments and on the ground level commercial spaces.

The 2 bedroom apartment benefits from a spacious living areas with contrasting wooden floors and large windows looking out to the water front views. The upper floor includes a terrace with incredible views over the river and town. - REF: PLP232



Area: 145 m2

Bedroom(s): 2

Bathroom(s): 2

Pool: No

Garden: No

362.500 EUR

Ref: PLP232