



## IDEALHOMES > Portugal

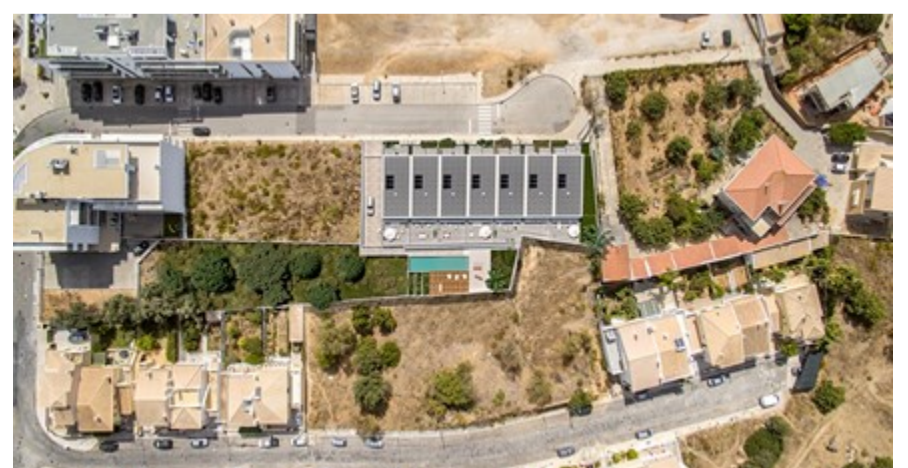
### Urban Land with Project in Popular Location in Portimão, Portimão

An urban land with a plot size of 2650m<sup>2</sup> situated in Portimão, a popular city on the Western Algarve, making this real estate investment easy accessible and extremely well located. A project has been approved to build seven houses in a closed condominium, which can be used as holiday homes, a way of generating income through rentals or a permanent home.

With a peaceful surrounding area and neighbouring properties nearby comprised of a mixture of residential properties, holiday homes and investments properties, offering a versatility which can suit all needs and wants.

Portimão's Marina is just seven minutes away, and Praia da Rocha's beach can be reached in only ten minutes. Situated on the southern section of Portimão, it is an area that has been built up on the Atlantic Ocean. Close to here is Praia dos Tres Castelos, another stunning beach renowned for its bizarre and dramatic limestone rock formations.

Traditionally a centre for sardine fishing and processing, Portimão today has seen that industry slow down and is mainly now full of tourism, leisure, and retail, leaving it as a large and residential city. Most tourists visit Portimão either for the extensive shopping or excellent public transport but there is a surprising amount to be seen within the city.



Area: 2650 m<sup>2</sup>

Bedroom(s): -

Bathroom(s): -

Pool: No

Garden: No

**379.000 €**

Ref: IDH31258